

FITS
1:6 BLYTHE
DOLLS

SPIRIT JERSEY

SEWING PATTERN








PDF PRINTABLE PATTERN



DETAILED PHOTOS



-  [c/dollypop](https://www.youtube.com/c/dollypop)
-  [@dollypopdolls](https://www.instagram.com/dollypopdolls)
-  [/dollypopdolls](https://www.facebook.com/dollypopdolls)
-  [@dollypopdolls](https://www.tiktok.com/@dollypopdolls)
-  linktr.ee/dollypopdolls
-  dollitefully@gmail.com

DIFFICULTY LEVEL: *Intermediate*





Hello and welcome!

I am honored that you've selected my pattern for your next project. I know there are many choices available out there, and I'm pleased you've selected mine. If you have any questions or issues with the pattern, you may contact me at any of my social media profiles or email at dollitefully@gmail.com

This pattern is designed for a 1:6 scale doll, specifically the Takara, Azone, and Obitsu 22/24 bodies. It will likely fit other dolls, or you may adjust the pattern to work with your doll's measurements. I recommend reading through the instructions first, so you can make some creative decisions about your hat before you cut any fabric.

I have a video on YouTube where I show the making of a shirt similar to this one. I don't follow the exact same directions, but you can get the idea. You can find it here: <https://www.youtube.com/watch?v=CtRXtcpXFdM>

The pattern is intended to be printed on 8.5 inches x 11 inches paper at 100%. Be sure to measure the inch block I've included with the pattern to ensure your pieces are printed at the correct size.

Also, it's a good idea to wash and dry your fabrics prior to cutting. You don't want the fabric to dye your dolls.

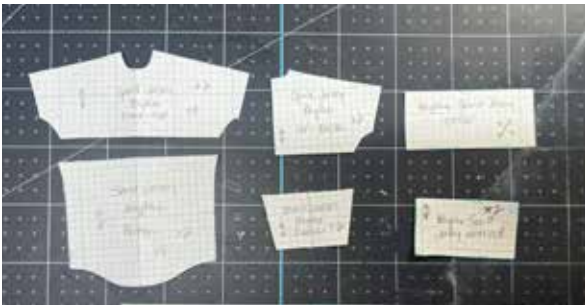
Lastly, this pattern is for **personal use only**. If you would like to use the pattern to sell your own items, contact me and we can make arrangements. Please don't share the digital file, as I spent a lot of time designing this pattern.

Thank you again,



SUPPLIES

- Fashion Fabric (I suggest a lightweight, small knit jersey with a lot of stretch)
- Thread (I use Gutterman polyester)
- Sewing machine
- Jersey or Stretch Machine Needles
- Iron and Ironing Board
- Hand sewing needles
- Scissors (Or a rotary blade)
- Sewing pins or clamps
- Marking Chalk or Pen
- Fray Check
- Thin Velcro (Or you can cut whatever you have to size)
- ¼ inch bias tape (if you don't want to make your own) If you prefer to use pre-made bias tape for the collar, use ¼ inch tape. If it isn't stretchy, cut additional length and trim to size.
- Heat Adhesive Vinyl (if you want to put a design on the front or back)



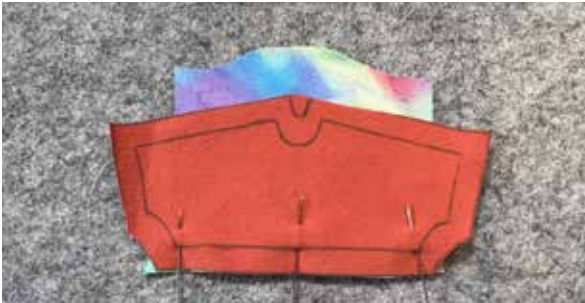
INSTRUCTIONS



Step 1: Cut your pattern pieces. I've included seam allowance on the areas of the pattern that need it. (That's the dotted line.) The collar and wrist cuff do not need seam allowance added.



Step 2: Trace and cut your pieces from your fabric. I usually use Fray Check around the raw edges, so my fabric doesn't unravel on me. Make sure your collar piece is cut on the bias of the fabric. If you are going to add vinyl to your design, I recommend attaching it to your fabric before cutting and then laying the pattern on top to choose where the vinyl will sit. (The pattern originally had a waistband, but I chose to remove it. That's why there are extra pieces.)



Step 3: Sew your front-top and front-bottom pieces together, right sides together.



Step 4: Topstitch on both sides $\frac{1}{8}$ of an inch away from the seam you just made. You can skip this step if you like, but I think it adds to the "spirit jersey" look.



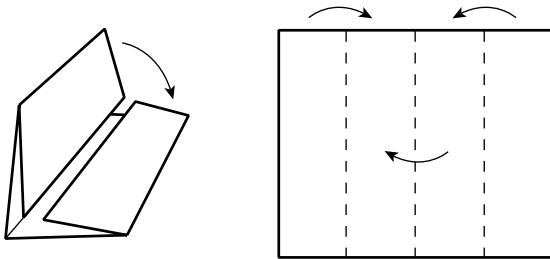
Step 5: With an iron, or using a basting stitch, fold over the seam allowance along the closing edge of the back-top pieces. This simply gets the extra fabric out of your way for now.



Step 6: Sew the shoulder seams of the front-top piece to the back-top piece. (Note: My photo shows the back-bottom piece attached, but as I was testing the pattern, I realized that doing this step first makes the collar easier to sew.)



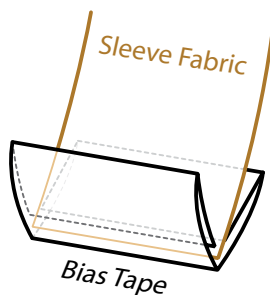
Step 7: Topstitch on both sides of these seams like you did in Step 4. Again, you may omit this step if that's your preference.



Step 8: Fold and press your collar fabric (lengthwise) by folding one edge to the center, and the opposite to the edge to the center, then folding the entire piece lengthwise to encapsulate the raw edges. Congratulations, you've just made bias tape! If you don't want to make your own bias tape, then use 1/4 inch bias tape in it's place but cut a length longer than the 3 inches I've patterned.



Step 9: Unfold your collar and line one edge up with the neck edge of the shirt (right sides together) and sew along the first fold line. This can be relatively difficult, but your fabric should bend easily because you cut it on the bias. Be patient and use lots of pins! Also, due to how small this circle is, I would recommend hand sewing along this line with a back stitch. However, if you're brave, go ahead and use your machine!



Step 10: Snip the seam allowance about every 1/4 inch or smaller to help the collar curve. Be careful not to snip through your line of stitches! Fold the collar fabric over to the wrong side of the fabric, so the center fold line is now the top of your collar, and the raw edge is folded under in the back.



Step 11: Using a felling stitch (or whip stitch) to secure the backside of the collar in place. Try to only grab the seam allowance fabric, and stitch under the fabric overlap, so your stitches aren't seen from the right side of your fabric.



Collar Alternative: If this method of making a collar is too intimidating, you can omit the collar piece and lay a small square of your fabric on top of the collar area and stitch along the marked collar line. Then fold the square of the fabric to the inside and trim the fabric so it lays flat inside. Then press the edge of the collar. If you like, you can topstitch around the edge to keep the folded piece in place.



Step 13: Now sew your back-bottom piece to your back-top pieces, making sure to align the center back and collar. I clamp the collar end with a little sewing clamp, just to ensure it stays in place. (Remember that your collar is already in place, not like in my photo.)



Step 14: Topstitch on both sides of the seam like you did in Step 4.



Step 15: Grab a cuff piece and fold the fabric in half (lengthwise). I usually iron this so the fabric stays folded. Line the raw edge of the bottom of the sleeve with the raw edge of the cuff (right sides together) and sew $\frac{1}{4}$ of an inch from the edge. While sewing, pull gently on the cuff fabric toward you. This will make the fabric bow in a little and produce a more realistic-looking cuff.

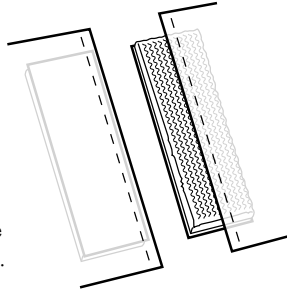


Step 16: Line the sleeve piece together with the sleeve opening of the shirt (right sides together) and sew it in place. Do this for the other sleeve too.



Step 17: If you used a basting stitch for Step 5, unstitch it now and include the collar fabric in your overlap. You may baste this part again, or iron to keep it in place. Attaching the Velcro. With one piece cut about $\frac{1}{4}$ of an inch wide (I chose the loop side) by 1.5 inches long, sew it to the inside of one of the folded over closing edges on your top-back piece. Be sure to get it as close to the edge as possible. With the other side of the Velcro, cut one piece that is about $\frac{1}{2}$ inch wide, by 1.5 inches. (I chose the hook side for this because it's sturdier.) Sew it to the other side of the back opening, with $\frac{1}{4}$ of an inch of Velcro poking out. (Hooks or loops facing away from the doll's back.) When you attach the Velcro, it will create a beautiful seam with less bulk.

*Velcro should be the entire length.



Step 18: Flip the entire garment inside-out, and sew up the sides from the waist to the sleeve cuff on both sides.



Step 19: Fold up and press the waist hem and stitch it in place.





Congratulations on making your spirit jersey!

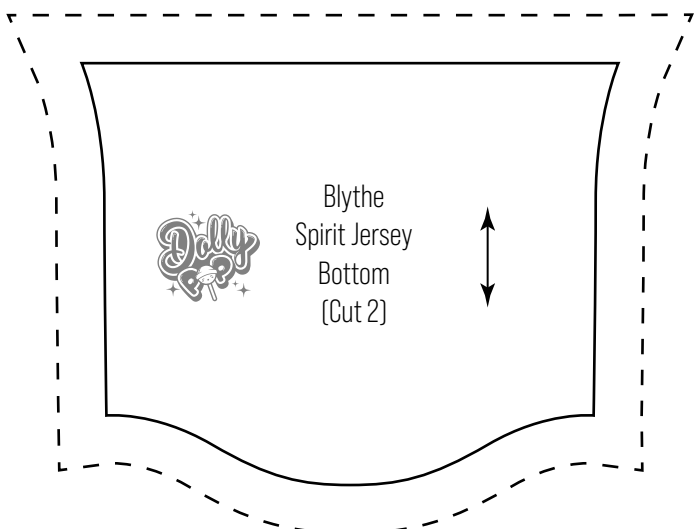
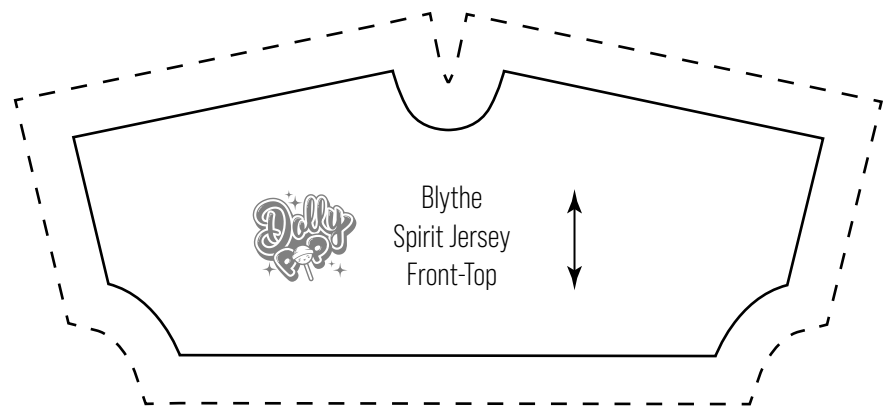
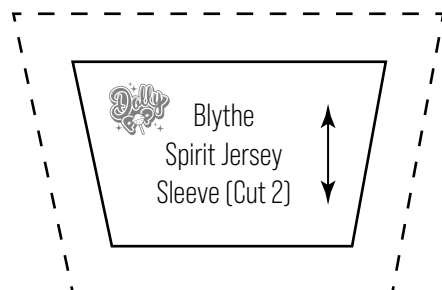
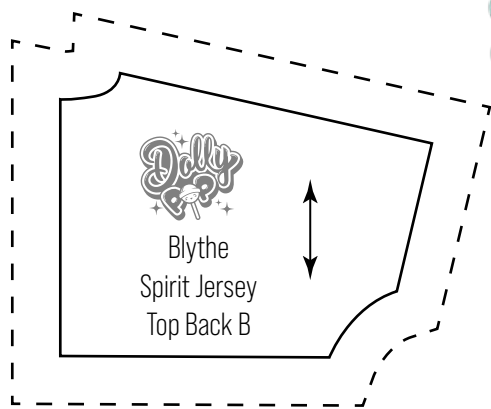
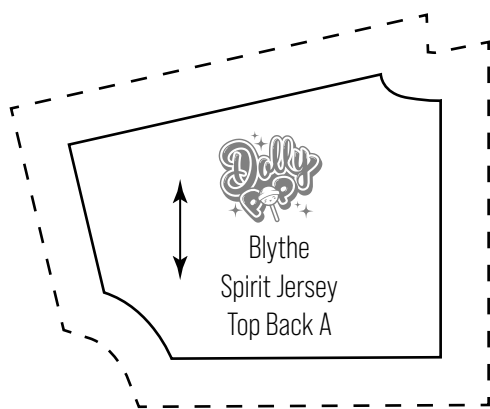
If you have any questions, you can contact me through any of the avenues linked in my LinkTree.

<https://linktr.ee/dollypopdolls>



I'd also like to thank Kristine Eash at The Dolly Lab for testing this pattern before release.





1 Inch
(For Scale)